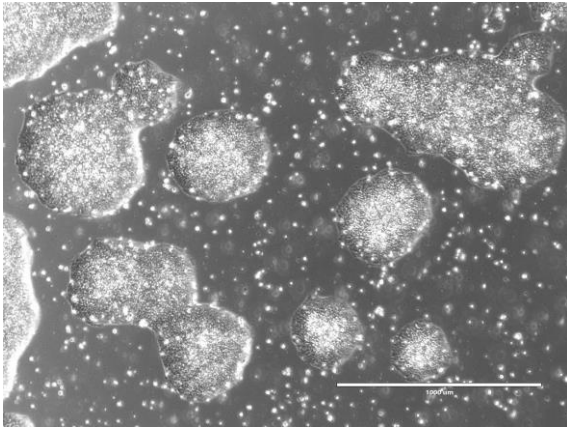
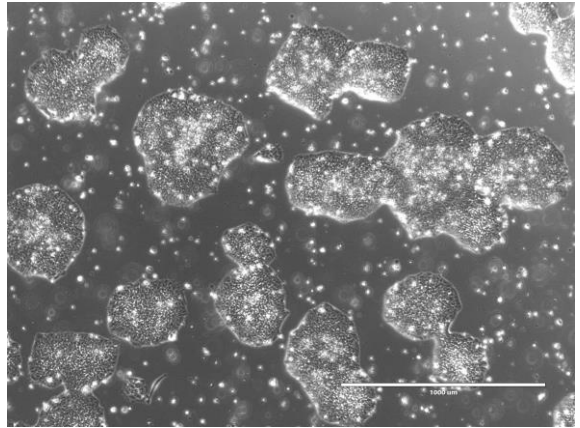


【 CiRA-j-1449 】 Morphology of iPSC colonies

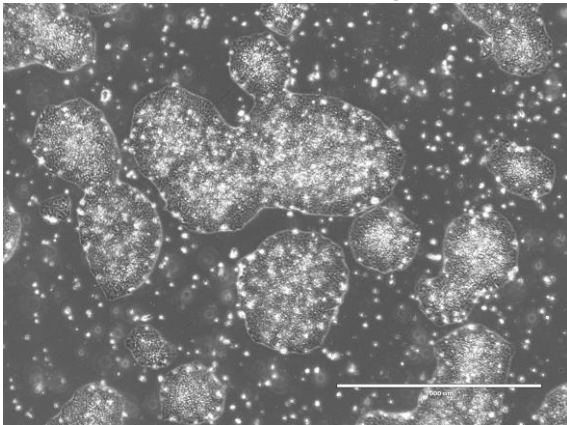
CiRA-j-1449-A: passage-3



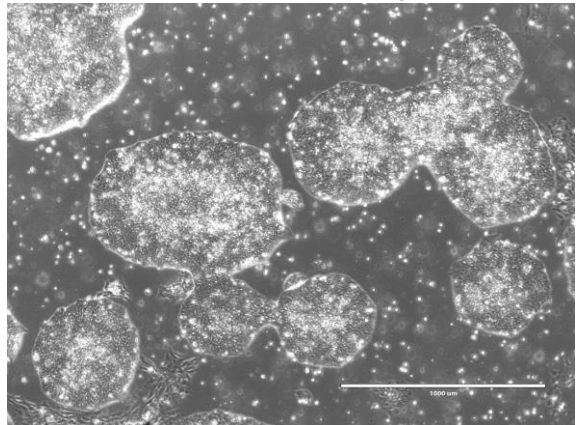
CiRA-j-1449-B: passage-3



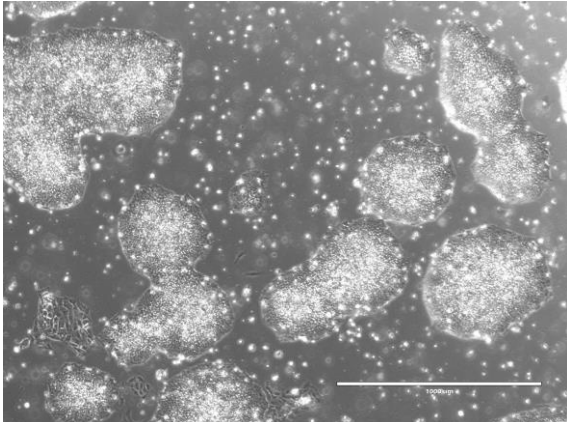
CiRA-j-1449-C: passage-3



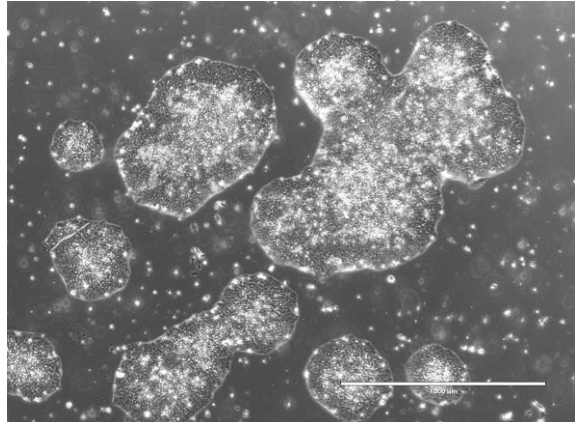
CiRA-j-1449-D: passage-3



CiRA-j-1449-E: passage-3



CiRA-j-1449-F: passage-3



(All images were captured at 4x magnification)